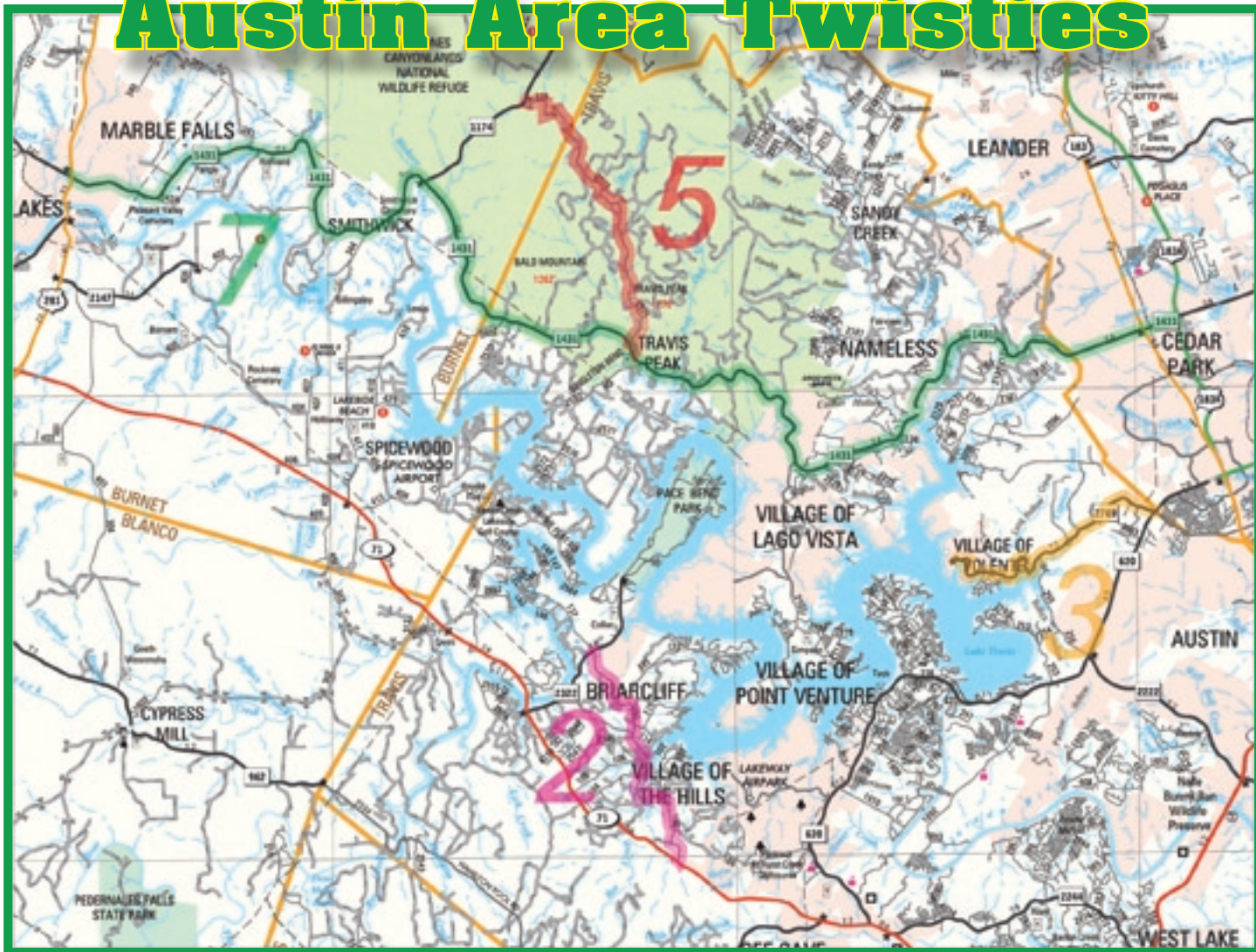


# Austin Area Twisties



There are MANY beautiful roads to ride in the Texas Hill Country. We offer you four reader suggestions, presented in partnership **MAPSCO**. All are NW of Austin. Pick one or two, or ride them all. Send us pics of you and/or your friends on one of these rides (must contain street/city limit signs) and receive a free gift.

## #2 – Bee Creek Road

“One of the best roads for tight corners, elevation change, and general fun!”

Take 290 heading N/E; Take 71 N/W; Take Bee Creek Rd N; Ending at Pace Bend Rd.  
7 miles; 17 minutes.

## #3 – FM 2769/Volente Rd

“Mostly following the Lake Travis shoreline, this short, but twisty ride is full of switchbacks & tight sweepers.”

Take 183A out of Austin; Exit/Left on Anderson Mill Rd; Left on Volente Rd/FM 2769; Ending at Lime Creek Rd.  
7.8 miles; 19 minutes.

## #5 – Cow Creek Rd

“Very twisty, bumpy & technical – loads of fun!”

Take 183A out of Austin; Exit/Left on FM 1431/Whitestone Blvd; Right/North on Cow Creek Rd; Ending at 1174.  
8.6 miles; 20 minutes.

## #7 – FM 1431 to Marble Falls

“One of the most popular in Central Texas. Varying elevations and sweeping turns.”

Take 183A out of Austin; Exit/Left on FM 1431/Whitestone Blvd; Ending in Marble Falls.  
38 miles; 1 hour, 17 minutes.

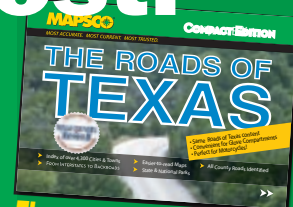
# Get MAPSCO or Get Lost!

# MAPSCO®

[www.mapSCO.com](http://www.mapSCO.com)

800-950-5308

Mention This Ad For A Special Offer!  
Mike Kline at 800-950-5308 ext. 325 or  
Debbie Hernandez at 800-950-5308 ext. 317



The complete Atlas that fits in your saddlebag!